



# MUO - Muon Lifetime

Physics 111B: Advanced Experimentation Laboratory

University of California, Berkeley

## Contents

<b>1 Description of the Muon Lifetime Experiment (MUO)</b>	<b>2</b>
<b>2 Muon Lifetime Experiment Photos</b>	<b>3</b>
<b>3 Before the 1st Day of Lab</b>	<b>4</b>
<b>4 Objectives</b>	<b>4</b>
<b>5 Introduction</b>	<b>5</b>
<b>6 Apparatus</b>	<b>5</b>
6.1 Overview . . . . .	5
6.2 How the Experiment Works . . . . .	7
6.3 Explanation of the LabVIEW Programs . . . . .	8
6.3.1 Program Controls . . . . .	10
<b>7 Procedure</b>	<b>11</b>
7.1 Inspecting the apparatus . . . . .	11
7.2 Inspecting the Signal . . . . .	11
7.3 Determine optimal settings using the LabVIEW program View Signals . . . . .	12
7.4 Data Collection . . . . .	13
7.5 Calibration of Electronics . . . . .	14
<b>8 Analysis</b>	<b>16</b>
8.1 Note on Analysis Tools . . . . .	17
<b>9 Computer simulation of experiment and analysis</b>	<b>17</b>
<b>10 References</b>	<b>19</b>

## 1 Description of the Muon Lifetime Experiment (MUO)

Revised 2025-08-27

1. **Note that there is NO eating or drinking in the 111-Lab anywhere, except in rooms 282 & 286 LeConte on the bench with the BLUE stripe around it.** Thank You the Staff.

The muon is an unstable particle, with a lifetime on the order of microseconds, which decays by means of the weak interaction into an electron and two neutrinos. If we start out with  $N_0$  muons, then the number of muons present at a time  $t$  later is  $N(t) = N_0 e^{-\frac{t}{T}}$  where  $T$  is the mean life.

In this experiment, cosmic-ray muons that enter a large tank of liquid scintillator trigger the emission of a pulse of photons. These photons are detected by a photomultiplier tube. If the muon stops inside the tank, another pulse of light is produced when the muon decays. We can use the distribution of time differences

to measure the muon lifetime. A histogram of these time differences for many decaying muons resembles an exponential distribution from which the mean lifetime can be determined.

You will get acquainted with a number of electronic devices that are quite common in laboratories. Data analysis using a computer and program writing are required. You will spend time in setting up the equipment. Once that's done and data-taking is started, you don't need to be in the lab, except for checking out how everything is working.

1. Pre-requisites: None
2. Days Allotted for the Experiment: 6

All pages in this lab. Note To print Full Lab Write-up click on each link below and print separately

1. [Exponential Probability Distributions](#)
2. [Error Analysis Notes](#)
3. [Detailed Description of the LabVIEW Software](#)
4. [Calibration Setup Procedure](#)
5. [Muon Analysis in ROOT](#)

This lab will be graded 20% on theory, 20% on technique, and 60% on analysis. For more information, see the [Advanced Lab Syllabus](#).

## 2 Muon Lifetime Experiment Photos

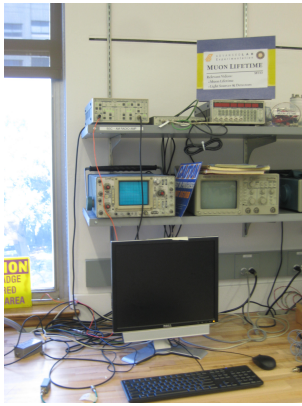


Figure 1: Front view of the lab station for the muon lifetime experiment. See larger image [here](#)



Figure 2: High voltage power supplies for top & bottom PMTs with the black base of the top PMT shown. See larger image [here](#)



Figure 3: Close up of the black base of the top photomultiplier tube found in room 275. See larger image [here](#)



Figure 4: Vertical shaft found in room 275, where the large liquid scintillation tank sits. See larger image [here](#)

### 3 Before the 1st Day of Lab

Complete the MUO Pre Lab found in the [Signature Sheet](#) for this lab. Print the signature sheet, discuss the experiment and pre-lab questions and answers with any faculty member or GSI, and receive their signature. In the course of the lab there will be examination points where you must STOP and get a GSI or professor to verify your understanding and/or verify proper experimental setup. You cannot skip these checkpoints, and must receive signatures demonstrating that you've consulted the staff. Some experiments may have mid lab questions that must be completed by specific days of the experiment. The completed [Signature Sheet](#) MUST be submitted as the first page of your lab report. Quick links to the checkpoint questions are found here: [1](#) [2](#) [3](#) [4](#) [5](#)

1. *Note: In order to view the private Youtube videos hosted by the university, you must be signed into your berkeley.edu Google account.*  
View the [Muon Lifetime Video](#).
2. Last day of the experiment please fill out the [Experiment Evaluation](#)

#### Suggested Reading:

1. B. Rossi, "[Interpretation of Cosmic-Ray Phenomena](#)", Rev. Mod. Phys. **20**, 537 (1948). *Gives the cosmic ray flux at sea level. Figure 6 on p. 545 is important for your calculations.*
2. D. Griffiths, [Introduction to Elementary Particles](#), 1987. *Read the introduction (pp. 1-10). The result of a tedious calculation of the muon lifetime is given in pp. 307-309.*
3. R.D. Evans, [The Atomic Nucleus](#), McGraw-Hill (1955). *Read about radioactive decay in Chapter 15.*
4. C.S. Sutton et al., "[Undergraduate Cosmic Ray Muon Decay Experiments with Computer Interfacing](#)", Computers in Physics, Nov/Dec, 76 (1987), #QC52.C658.
5. O.C. Allkofer, [Introduction to Cosmic Radiation](#), Verlag Karl Thiemig, Munchen (1975). Read Sections 4.1, 9.1-9.6, 9.12, and 10.1-10.4.
6. "[RCA-4522 Photomultiplier Tube Specifications](#)", RCA Electronic Components, June, 1 (1968).

More [References and Manuals](#)

You should keep a laboratory notebook. The notebook should contain a detailed record of everything that was done and how/why it was done, as well as all of the data and analysis, also with plenty of how/why entries. This will aid you when you write your report.

### 4 Objectives

- Measure Muon Lifetime
- Measure Local Muon Flux
- How to Analyze a Convenient Source of Genuinely Random Numbers
- Simulate "Muons" and Measure their Lifetime
- Learn data analysis tools, fitting histograms

## 5 Introduction

The goal for this lab is to measure the lifetime of the muon. This is a relatively simple experiment, but one that can achieve surprisingly good precision if you are careful. Calibrating the electronics properly is important and is worth doing carefully. Most of the adjustments are made in the analysis using software. Don't rush through the adjustments, but ensure you understand what you are doing and how your changes affect the data. Get the settings right before spending all day and night recording data; otherwise you only find out later that the data are useless. Once you have the data and a nice plot on the screen, you still need to work hard to make a proper analytical fit and to extract a correct value for the lifetime.

Muons are particles that have a mass over 200 times that of the electron. Muon decay is of great importance in the study of weak interactions, one of the fundamental forces in nature. The value of the muon lifetime is one of the most precisely known constants, and is currently measured with a precision of a few parts per million. In this experiment, low-energy muons are primarily created from decays of particles produced in the interactions of high-energy cosmic-rays with the earth's atmosphere. Eighty percent of the cosmic rays at sea level are muons, positively or negatively charged. They have a mean lifetime of a few microseconds.

They decay by the following processes:



and



By the CPT theorem, the lifetimes of the negative and positive muons in *vacuum* (i.e. due to reactions (1) and (2)) are equal. However, in matter, negative muons, when brought to rest in the close neighborhood of some nucleus (Z,A) a muonic atom is formed with the muon orbiting in the K-shell. The negative muon in the muonic atom can either decay as shown in reaction (2), or it can disappear through the competing reaction:



where  $p$  and  $n$  are the proton and neutron respectively. The rate of the muon-capture process (3) depends strongly on the charge  $Z$  of the nucleus which captures the muon. In muonic carbon atoms, the rate of the muon capture (3) is about 10% the decay rate in (2).

Most of the muons that are incident on the detector pass straight through it. Only the lowest energy particles come to rest within the scintillating liquid itself.

## 6 Apparatus

### 6.1 Overview

The large liquid scintillation counter is located in a shaft which can be accessed from room 275 LeConte. It is filled with 125 gallons, 500 kg (1/2 cubic meter) of mineral oil in which a scintillating substance is dissolved. The passage of fast charged particles through the liquid gives rise to short pulses of light a few nanoseconds in duration. These flashes of light called scintillations are converted into electrical pulses by photomultiplier tubes located at the top and bottom of the detector (Figure 5). Each photomultiplier views half of the tank, which is divided by an opaque baffle in the horizontal mid plane.

A photomultiplier tube (PMT) is a detector that converts single photons into large pulses of electric current by successive multiplying stages (Figure 6).

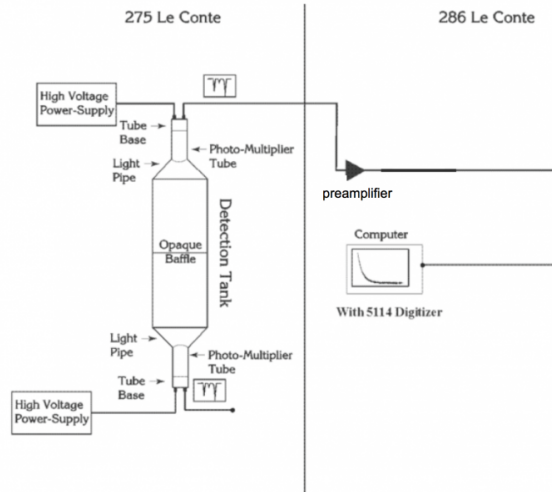


Figure 5: Block Diagram of the Muon Lifetime Experiment

**In the shaft of room 275 Physics Building (Get a GSI to let you into the room) are located:**

- a high voltage supply and a high voltage divider for the photomultiplier tubes. The high voltage of the photomultiplier tube normally is left on and is NOT adjusted by the student. See the staff in the 111-LAB. These photomultiplier tubes are irreplaceable. Do not mess with them.
- a voltage meter to read the individual high voltages. *Under no circumstances should the high voltage exceed 2200 V!*
- one large liquid scintillator with 500 kg of doped mineral oil
- cables leading to 286 LeConte where the rest of the apparatus is located.

**At the 286 LeConte Muon Lifetime Station are located:**

- SR445A 4-channel x5 amplifier, for amplifying the signals from the top PMT (white cable) and bottom PMT (black cable). The flashing red lights should indicate that they are receiving a signal.
- Tektronix TDS 360; Digital Storage Scope
- Tektronix 465 Oscilloscope (Analog)
- Miscellaneous equipment for calibration of the system and 50 ohm terminators
- Stanford Research Systems Model DG645 Digital Delay Generator for MUO-1 and DG535 Four Channel Digital Delay Generator for MUO-2
- National Instruments Digitizing Card # NI-5114

This Digitizer works together with a LabVIEW program that does two things: (1) it is an oscilloscope, (2) it is a differential detector logic system.

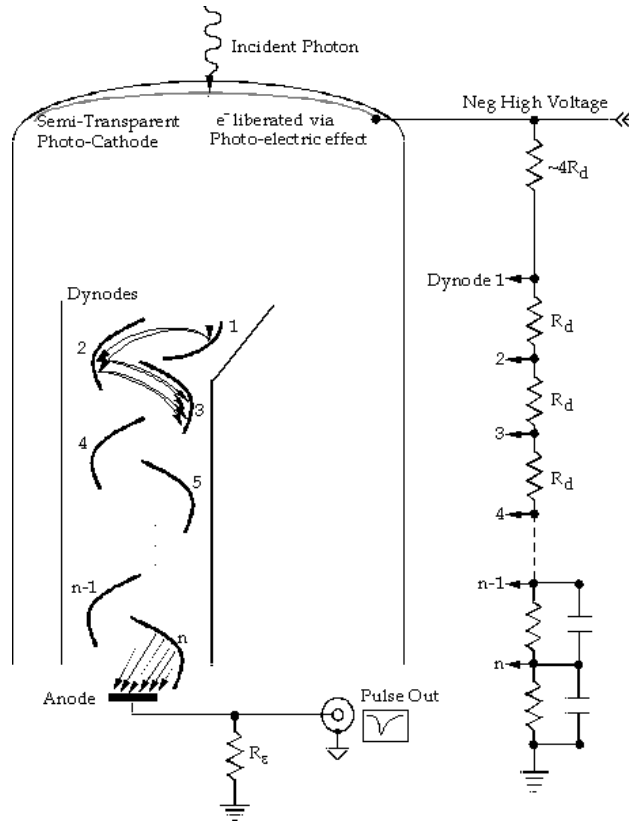


Figure 6: Schematic of a photomultiplier tube

## 6.2 How the Experiment Works

Muons are derived from the process of cosmic ray particles striking the nuclei of atoms and molecules in the atmosphere. A muon that passes through the liquid scintillator tank generates scintillation. A photomultiplier tube picks up the light pulse and sends an electrical signal through a cable to our experiment. A muon that enters, stops, and subsequently decays in the liquid scintillator gives rise to two pulses separated by a few microseconds, one when it enters the liquid, and a second one when it decays. The pulses can be viewed with an oscilloscope or digitized and stored on the computer. You are going to measure the time difference between these correlated pulses, as well as the amplitude and width of each pulse. After many such observations, you will obtain a distribution of the number of counts vs. time difference. Ideally, when these data are plotted, they will form an exponential decay curve, whose decay constant is the lifetime of the muon.

When the two pulses come down the cable, they are routed to an amplifier. Then they go to the National Instruments Digitizer Card NI 5114. You configure triggering and timing properties of the digitizer in the LabVIEW programs. The LabVIEW program **Muon Detection Program** coupled to the digitizer card detects pulses from two photomultiplier tubes, measures their arrival times, amplitudes, and widths, and, for a subset of pulses that satisfy a preset criteria, writes the data to disk. You will read the data offline, filter it to reject noise, plot the time difference between two pulses in the same photomultiplier tube, and use the distribution to measure the muon lifetime.

### 6.3 Explanation of the LabVIEW Programs

- Note: High voltage on the PMTs are as follows: Top tube =1900 Volts Negative and bottom tube = 2300 Volts Negative with the SR445A 4 each amplifier, setup top PMT 1 -amp, bottom PMT 2 amps.

This experiment uses two different LabVIEW programs: **View Signals** and **Muon Detection Program**. The purpose of **View Signals** is for you to choose the best input parameters by inspecting the signals and seeing how changes in the input parameters affect the signals and counting rates. (This reads the input signals like an oscilloscope). The optimal input parameters should then be used in the program **Muon Detection Program**, whose purpose is to save pulses to data files, from which you calculate the muon lifetime.

#### Detailed Description of the LabVIEW Software

##### Screenshot of the View Signals Program

##### Screenshot of the Muon Detection Program

A high-speed digitizer installed in the back of the computer receives two signals. The digitizer represents the incoming analog signal by generating a series of numbers that describes the discrete samples. The top PMT is connected to Channel 0 of the digitizer, and the bottom PMT is read out by Channel 1. The digitizer is configured and initialized when you click **Start Acquisition** in either of the Muon LabVIEW programs and essentially a programmed way to interpret the incoming signal. However since the digitizers purpose is to represent the incoming signal and process the data you can change its configuration throughout the program. You can set the input range for each channel separately; 2 V is about right for both channels (the offset is set to 20% of the range, so 2V corresponds to the range  $[-0.4V..+1.6V]$ ). The input impedance is set to 50 ohms and the digitizer uses full bandwidth.

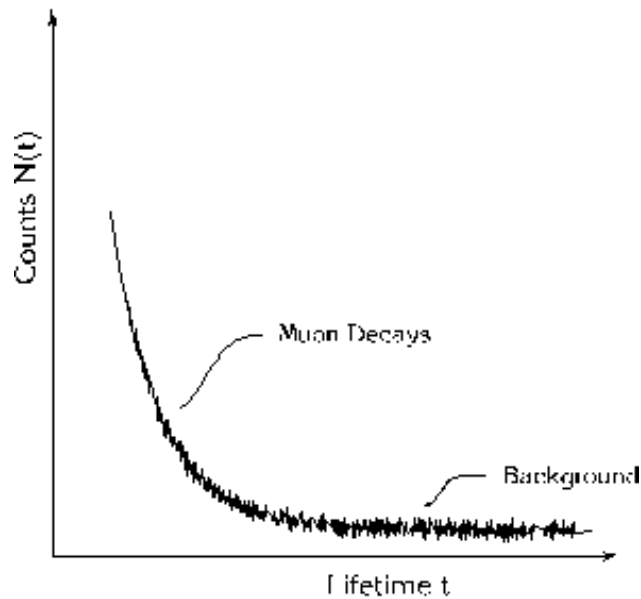


Figure 7: Distribution of the temporal separation between two signals. Note that the X axis sometimes is called the channel number for the digitizer. The Y axis is also called the amplitude counts.

Here is a brief description of the different program controls (a more detailed explanation is given in the following section):

The user control **Range (microseconds)** determines the minimum length of the record (counting from the trigger), i.e. the maximum difference between the trigger and the second pulse. The triggering event is set to be at 12% of the way through each record, so that the digitizer can see pulses just before the trigger. The user control **Min sample rate** specifies the minimum sample rate (leave it at 250 MHz). The type of

triggering is set to analog edge triggering. You can select to trigger on Channel 0, Channel 1, or External (which we do not use). The trigger slope is set by the user control **Pulse polarity**, and the user control **Trigger level** sets the trigger level. For signals with negative polarity you want to make sure that the green light is on and the signal is flipped, you can determine the polarity of the signals by hooking them up to the oscilloscope.

Both programs initiate a record acquisition by the digitizer and, once the voltage exceeds the trigger threshold, retrieve voltage waveform data for both channels, incrementing the **Trigger Count** by one. The programs remove the voltage offset by averaging the voltages of the first 200 samples of the record, all of which should occur before the triggering event, and subtracting that voltage from all the voltage waveform data. The programs then search for up to two pulses below (for negative **Pulse polarity**) or above (for positive **Pulse polarity**) the **Channel 0(1) threshold**, which you set. This threshold is relative to the offset, not ground. The first pulse will correspond to the Muon entering the scintillating material within the tank and the second to its decay. The time difference between the first and second pulses has to be less than the **Range**, which you set, and greater than the **Pulse 2 delay**, which you set. The range is simply a measure of how long the program will wait between pulses before moving on to the next signal. The pulse 2 delay is there in order to ignore any noise generated after the first signal that may pass the trigger level. Typically 1 microsecond is enough breathing time. You can specify how many pulses in each channel is required for the data to be written to disk, for our case we are looking for two events (i.e. the incident and the decay). The **Output Count** is incremented if exactly that number is found in each channel. Whether or not the output condition is satisfied, the process repeats with the next data record.

It is important to note that in the program **View Signals**, after clicking **Start Acquisition**, the program continues to acquire records from the amplifier and searches them for the specified pulses until you click **Stop Acquisition**. This program graphs the **Raw signals** acquired by the digitizer, the **Signal with offset removed** and the **Filtered signal** – for each channel (Channel 0 in white, Channel 1 in red).

Once you have determined the optimal settings for the program controls the next portion of the lab deals with the **Muon Detection Program** which measures the pulse height and width in addition to time. To reduce noise, the programs pass the waveforms through a 29-tap low-pass filter. You set the cut-off frequency of the filter with the control **Lower-cut off frequency**. **Pulse 1 threshold** and **Pulse 2 threshold** correspond to the unfiltered signal. Unfiltered pulses that meet these thresholds will have their amplitudes reduced upon filtering.

When you click **Start Acquisition**, the program prompts you to enter two different file paths to save data: a temporary local data file and a network data file. The temporary file is supposed to be on local disk (“C:/”) so that network connectivity does not affect performance. The temporary file is copied to the network storage (your “Documents/” directory) when the program terminates. After the files are open, the program begins acquiring records and searching them for pulses. When an output condition is satisfied (i.e. exactly the specified number of pulses is found in each channel, up to the maximum of 2), the program writes out a record of 12 floating-point numbers to the temporary file: time, amplitude, and width of four pulses: 1st pulse in Channel 0, 2nd pulse in Channel 0, 1st pulse in Channel 1, 2nd pulse in Channel 1. If a given pulse is not found in the record, the time, amplitude, and width are assigned zero values. **IMPORTANT FOR DATA ANALYSIS:** It is the values saved in this text file that you will be working with in the analysis of this lab. This is the file that you should be uploading to MatLab or ROOT as it will have all the information about the signals received from the PMT.

As the program runs, it updates a histogram of decay events, where the x-axis specifies the time between the two registered pulses. If everything is working correctly, this should mimic the Muon lifetime decay curve.

The program measures the amplitude and the full-width-half-max of each peak from the signal out of the filter. The filter removes a lot of the noise, so the amplitude and width information are more accurately measured with a filter. Timing information is more accurately measured before the signal is filtered.

### 6.3.1 Program Controls

#### Flip polarity

In order for the program to run successfully, a positive signal with respect to ground is expected on both channels. However, the incoming signal from the experiment may be negative, which would crash the program. Enabling **Flip Polarity** negates the incoming signal, so that a negative signal becomes positive. If the incoming signal is already positive, **Flip Polarity** should be disabled.

#### Select Trigger

This control is identical to selecting a trigger channel on an oscilloscope. When a large enough pulse (see **Trigger Level**) is seen on the selected channel, the program collects data on both channels for a time duration set by **Range**, and then processes those signals for peaks.

#### Trigger Level (V)

This defines the signal amplitude which is required for the trigger to be activated.

#### Pulse Detection Threshold (V)

Once the trigger is activated, the program scans the collected signal for pulses. This control defines the minimum amplitude of a signal in order for it to be recognized as a pulse. Any part of the signal which is above this threshold will be recognized as a pulse, and any part which is below this threshold will not be recognized as a pulse.

#### Pulse 2 Delay ( $\mu\text{s}$ )

Once the trigger is activated, we wish to ignore any pulses that occur shortly after, since they may simply be noise, as opposed to a muon decay event. This control allows the user to define how long this ignore period should last. This control should be large enough to ignore this noise, but not so large as to ignore a significant portion of the actual muon decay events.

#### Range ( $\mu\text{s}$ )

After the trigger is activated, the program must collect the signal which is to be analyzed for some amount of time. This control allows us to set that time duration. After this time has passed, the program analyzes the collected data for pulses, and then returns to listening for the next trigger event. This control should be just large enough to encompass a large majority of decay events.

#### Exact Number of Pulses

Once the program has identified all of the peaks existing on the most recently received signal, it must determine whether or not these pulses represent a muon decay event. The event is registered as a true muon decay event only if the number of pulses on Channel 0 and on Channel 1 match exactly with the specified **Exact Number of Pulses**. There are three suggested use cases: [CH0 = 2, CH1 = 0]: This signifies a muon which entered the chamber connected to channel 0, and then decayed in that same chamber at a time at least as long as defined by **Pulse 2 delay**, but no longer than **Range**. Since there are only two pulses on this channel and no pulses on the other channel, we are convinced that another muon did not interfere with the measurement. For this setting, the user should set the trigger on Channel 0. [CH0 = 0, CH1 = 2]: Same as above, only for the chamber connected to channel 1. For this case, the user should set the trigger on Channel 1. [CH0 = 1, CH1 = 1]: This represents a muon event in which a muon is first detected in one chamber, but then its decay is detected in another chamber, and no other pulses are recorded. It is suggested that for this case, the trigger Channel is set to the Channel which is connected to the chamber which is on top, since more likely than not, we expect the muon to come from the above the surface of the Earth, and not below.

#### Vertical Range

This control allows the user to define the vertical range of the digitizer channel. This is analogous to setting the vertical range of a channel on a regular oscilloscope. This value should be just large enough to encompass the amplitude of any received pulse.

## Low Pass Filter Cutoff

The program passes a received signal through a Low Pass filter in order to reduce noise. This sets the high-frequency cutoff for that filter.

## Min Sample Rate

This parameter sets the sample rate of the digitizer.

# 7 Procedure

## 7.1 Inspecting the apparatus

Inspect the apparatus in Room 275: (Get GSI to let you into the room.)

- Check the voltage setting of the PMTs but do not change (the knobs on the power supply are accurate, not the power supply's meter).
- Notice the color of the co-axial cables on the output of the high-voltage amplifier (connected to the PMT)

**Checkpoint** Apparatus in the other room:<sup>†</sup> **Make sure you have seen the apparatus in the other room.**

## 7.2 Inspecting the Signal

Now return to the MUO station in the 111B Lab Room to view the signals on the oscilloscope. The purpose of this is to get a visual estimate of the pulse amplitudes and time separation between the initial interaction peak and the decay peak. You will use these estimates on the LabVIEW programs.

- The cables that originate in Room 275 should be connected to the amplifier. Check the gain setting of the amplifier. The amp outputs a 5x gain.
- Using a fast digital storage oscilloscope (Tektronix MSO-2024), observe the output of the amplifiers. The cable must be terminated at the oscilloscope with a  $50\Omega$  (what happens if it is not? Try it).
- Find appropriate trigger and time-scale settings for detecting muons. You do not want to trigger on too low of a voltage, the erratic oscillations are simply noise and you are looking for very narrow sharp pulses following the initial large pulse.
- You should see pulses at  $\sim 100$ - $1000$  Hz up to  $\sim 1.0$  volt in amplitude, followed occasionally ( $\sim 1$  Hz rate) by smaller delayed pulses. Many of these are muon decays, others are the result of various sources of noise. This is where the evolutionary capabilities of your eyes and brain working together will come in handy!
- Note the polarity, typical magnitude, and width of the pulses
- Once you have all this information written down it will make optimizing the LabVIEW program a lot easier.

**Checkpoint** Oscilloscope (MSO-2024):<sup>†</sup> **Explain why the cable is terminated at the oscilloscope. What polarity are the signals, positive or negative? What are the pulse widths and amplitudes? The scope will trigger depending upon the polarity of the signal, it is important to understand what polarity the signals are before moving on to the LabVIEW program as it will need to be specified when the data acquisition begins. Describe how a typical muon decay process looks like in the scope and how Trigger Level and Pulse Detection Threshold might affect the measurement in the program. GSI your signals on the oscilloscope and discuss what values you think are appropriate for the LABView program.**

## 7.3 Determine optimal settings using the LabVIEW program View Signals

### Program operation and description [National Instruments Digitizer VI](#)

1. Now use the LabView Program **View Signals** on the desktop.
  - If the pulses coming into the digitizer card are negative, **Flip Polarity** should be enabled.
  - Estimate the average height of the primary and delayed pulses.
2. Inspect the amplified pulses with ViewSignals VI. Vary the frequency cutoff and observe how the signal and noise change. Pick the frequency cutoff that optimizes signal/noise ratio. Set the thresholds so that the counting rates (both input and output) make sense. Both should be safely above the noise level.
  - For the standard data taking (i.e. when you will be collecting data for measuring the muon lifetime), you will require 2 pulses in the top PMT (Channel 0) and 0 pulses in the bottom PMT (Channel 1). What does this setting mean?
3. **If you are in MUO-1:** You will use the pulse generator (SRS DG645) to simulate a sequence of two pulses of approximately the size and width as the output of the detector in Room 275 later for calibration. Thus, you should get familiar with using the pulse generator. The first thing you should take note of is the front panel of the SRS DG645 for producing the pulses. The "edge" section is located on the left side of the display. The "edge" refers to the 5 different output channels, each with a 50 ohm impedance, located in the bottom of the front panel under the display. You will notice that the outputs have two letters associated with them, each located on a different edge of the signal. The first edge refers to the offset above ground and the second edge to the step size, this will effectively determine the peak-to-peak voltage of your signal above ground (an example would be A and B, where A is the offset and B is the step size). Under the display there is a section labeled "display" where you can navigate the different edges and move the cursor on the display (indicated by the character that is flashing). The two signals should be connected to ports AB and CD. Adjust the voltage for the expected peak heights as discovered in Section 7.1 ("inspecting the apparatus and the signal"). Next you will want to set the delay of the second pulse relative to the first. This can be accomplished by pushing the "delay" button located in the display section. It will prompt you to input a time delay in seconds, notice the white lines and labels located right above the display, these provide you with the units of input for your delay. Simply move the cursor over to the digit you wish to change and then adjust using the up and down arrows located directly under the "MODIFY" section. However, make sure that when you set the delay you are selecting the correct edge to delay and that the green LED light is on for the output programmed to be the second pulse (for example if you want CD to have a delay you would make sure the LED green light is located on C and adjust the delay time). The width of the pulse can also be determined by the delay function, however now the delay is not between different outputs, but rather it is between different edges of the same output. Make sure that the LED green light is located on the second edge of the output signal and adjust the delay for the desired width of the signal. Now you should be well equipped to navigate your way through the pulse generator. Use the oscilloscope to examine the generated pulses to make sure they are consistent with your settings. However if you need any more information call over a GSI or professor and also feel free to examine the manual found here: [SRS DG645 Manual](#).
4. **If you are on MUO-2** You will use the pulse generator (SRS DG535) to simulate a sequence of two pulses of approximately the size and width as the output of the detector in Room 275 later for calibration. Thus, you should get familiar with using the pulse generator. Find the Menu section on the front panel of the pulse generator. Press the Trigger button. You will see a menu that looks something like this: **Int Ext Ss Bur Line**. There will be an underscore, likely under the I, that represents the location of the cursor. This can be moved with the left and right arrows on the front keypad. If the cursor is not under Int, move it so that it is. When on the Int setting, the pulse generator will send a step to the trigger output (T0) at a rate determined by an Internal clock. Press Trigger again. You will see a menu that looks something like this: **Rate = 6.000**. This is the rate at which trigger pulses

are sent on the T output in pulses per second. Now the cursor indicates which of the displayed digits you are editing. Use the right and left arrows to move the cursor, and the up and down arrows to change the digit values. Press the Delay button. You will see a menu that looks something like this: **A = T + 0.008 000 000 000**. This means that 8 ms after each trigger pulse, the pulse generator will send a step to the A output. Press Delay again. You will see a menu that looks something like this: **B = A + 0.000 055 000 000**. This means that 55 microseconds after the step is sent to A, a step will be sent to B. The 'A +' means that the B output is delayed relative to A. You could change this so that B is delayed relative to T (or C or D) by editing the A just like you would edit the numbers. Continuing to press Delay allows you to set the delays for channels C and D. Note that C should be timed relative to A, and that D should be timed relative to C. In addition to the step outputs A,B,C and D, there are four pulse outputs. The output labeled with a pulse between A and B puts out a high voltage only for the period between when a step is sent to A and when a step is sent to B. I.e., with the settings above, it turns on at time T+8ms and turns off 55 microseconds later. The channel labeled with an inverse pulse between A and B is the inverse of the one with the non-inverted pulse. The CD pulse outputs are programmed just like the AB outputs. The Output menu allows you to specify the high and low voltage levels for each of the steps and pulses, as well as the expected load on the outputs. Please refer to the SRS DG535 manual for any further questions.

**Checkpoint Trigger Rate:**<sup>†</sup> With the program & apparatus counting muons, estimate the *Trigger* rate and the *Output* rate that are displayed on the program Front Panel. Do these rates agree with your calculations for the muon incidence and stopping rates (from the Pre-lab)? If the rates do not make sense, you might try adjusting the program thresholds (what does this do?). How might changing the threshold settings affect the *accuracy* of your data? Discuss these questions and your reasoning behind their answers with a GSI.

## 7.4 Data Collection

1. Set up the Main program & apparatus. Transfer your settings from the View\_Signals VI to the main VI, Muon\_Detection\_Program.
2. **Save files properly. Otherwise, the program may crash.**
  - When you **Start Acquisition**, the main program will ask you for four (2) unique file names to save data.
  - The final file **MUO final filtered pulse data.txt** should have the path *My Documents\LabView Data\*. It will be saved when the program finishes or when you **Stop Acquisition Early**.
  - The temporary file **MUO temp filtered pulse data.txt** should be saved to the local C: hard drive in *C:\LabView Local Save\“login name”* for speed. If you do not save it locally, the program may crash. If there is a program error, your data should be recoverable from this file.
  - Note: These files are needed for the program to function. Keep in mind they are duplicate files, one set saved to the local hard drive and the other set saved to the network drive.
  - Set the experiment run time to 20-30 minutes of data. Start an initial test collection. Remember, you will take an overnight data set. This is your opportunity to ensure that you have set your parameters accordingly.

Note: You MUST remember to Start the program first, then push the **Start Acquisition** button. To **STOP** remember that you must push **Stop Acquisition Early** button first before you push the **RED program stop** button; otherwise your data will not be saved correctly.

**Checkpoint Initial Test Run:**<sup>†</sup> Show you 20-30 minute run to a GSI. Do you trigger and output counts make sense? Does your distribution make sense? Adjust your initial parameters as needed.

Using the settings you have demonstrated in the previous checkoff (trigger level, pulse detection, etc), set up and execute an overnight or a weekend-long data collection run. A very large

number of detection events will be needed in order to perform proper data analysis (100k to 1M pulses). Do your best to ensure the muon decays are being counted correctly before you leave for the night, there is not enough time allotted to perform multiple tests.

## 7.5 Calibration of Electronics

In experimental physics it is important to understand the electronics you work with and the limitations they place on your data. The equipment can reveal a lot about the scope of the experiment. To better understand the setup for this lab you will need to run three types of calibrations:

1. **Time resolution of the digitizer.** Our digitizer works in discrete steps and therefore there is a limit on its time resolution that is based on how quickly it can process and convert the incoming signal. We will want to determine this time resolution. It is important to stop and think why we care so much about the time resolution of the digitizer. What timescale should it be on to ensure that our experimental procedure works and the data we receive is accurate? (Hint: What are we measuring?) The time recorded by the two PMTs for *through-going muons*, (i.e. muons that go through both halves of the scintillator tank) will give us an understanding of the timescales that the experiment operates on. In order to extract this information from the **Muon Detection Program** the correct number of expected pulses in each channel should be input (Hint: The first PMT is located above the scintillating material while the other is located below)? Use the **View Signals** program to make sure that the trigger level and pulse thresholds counting rate is reasonable, the trigger level should be roughly near 0.1V (you may need to apply additional cuts on pulse amplitude if you set the thresholds too low). After you have collected a sufficient amount of data you are ready to examine the response rate between the two channels. This time difference data has some distribution. Fit it to a function you think is suitable (Hint: Here you have a large number of data points whose values are independent to one another all with small variations about an expected value. There is a common theorem used in statistical distributions such as this and will help dictate which function will fit the distribution. What two things can contribute to this?) You should see that the mean is not centered on zero, why is this? What does the standard deviation of the function tell you? (Hint: The standard deviation corresponds to the margin of error within your distribution. What are we measuring and what does the error tell us?) Do you need to apply any correction to the lifetime data ?

**Checkpoint Time Difference Data:**<sup>†</sup> Which function did you fit to the time difference data? Explain what the mean and standard deviation tell you about the data and its physical significance.

2. **Efficiency of the digitizer.** Since you will determine the muon lifetime from a histogram of *counts vs time*, you will need to make sure that each time interval is counted by the apparatus equally. To check this, you need to present the apparatus with *a-priori* uniform distribution of time differences. This is done by combining signals from two *uncorrelated* sources: a through-going muon, and an external pulse generator (DG645). As long as the counting rates from the two sources are similar, it's likely that the two trigger pulses will come from different sources.
  - First, set up the apparatus according to the procedure: [Calibration setup Procedure for Muon Lifetime](#).
  - Now use a ZSCJ-2-1 Power Splitter to add the Delay Generator signal to the Muon pulse, and run it to Channel 0 of the digitizer. The Power Splitter takes a signal from input 1, inverts it, and adds it to input 2. It outputs the sum on S. Specifically: plug the AB output of the Delay Generator into input 1 of the power splitter, plug the amplified Muon signal into input 2 (it does not matter if you use the top or bottom chamber), and then plug Channel 0 of the digitizer into output S of the Power Splitter.
  - You can use the oscilloscope to check the signal. Do you see the Delay Generator peaks? The Muon signal peaks? The polarity of both should be the same (be sure to remember if the polarity is positive or negative). If you wish to change the polarity of the Delay Generator pulses, press SHIFT and then press either 8 or 9. 8 corresponds to positive polarity, which 9 to negative.

- We would like to trigger on the Muon events and record when the pulses of the pulse generator arrive in relation to that. For this, we use the Muon Detection Program. Remember to select the appropriate polarity. Set the trigger level to be above the amplitude of the Delay Generator peaks to avoid triggering on it, but use a detection threshold less than that. For this, check on the oscilloscope for amplitudes of typical muon and pulse generate events. Since the muon events may be of low amplitude you may need to reduce the output of the pulse generate with an attenuator. Set the Exact Number of Pulses to be 2 on Channel 0 and 0 on Channel 1.  
Note: you may also try the opposite way, i.e. triggering on the pulse generator and looking at the muons in relation to that.

- Check the data rate: what do you expect?
- Collect the data: a total of more than 100k output pulses would be more than enough.
- Save your data, and repeat the procedure for Channel 1 of the digitizer.
- Data analysis: look at the distribution of time differences  $dt$  in each channel. Apply selection on pulse heights if the thresholds are set too low (e.g. the second pulse in each channel should be from DG645, and therefore very constant in amplitude). Select the interval where the counting rate is most uniform. Determine if the data are consistent with constant counting rate, or if you need to make a correction to the real muon decay data.
  - (a) Plot the histogram of counting rate vs  $dt$  for each channel. Remove bins that obviously over-count, if any.
  - (b) If there is an obvious slope to the distribution, you may not have set the thresholds correctly, and the VI is triggering on two muon pulses, instead of one muon and one generated pulse. Try adjusting thresholds in the VI, after carefully inspecting the amplitudes of the muon and generator pulses. The generator pulse has a very stable amplitude, typically between 0.3-0.4 V after the digital filter.
  - (c) Once you have a reasonable distribution of counting rate vs  $dt$ , convert it to semi-log scale, and fit to a straight line. Is the slope significant? If it is, how does it affect your muon data?

3. **Calibration of the digitizer clock.** Even though the VI reports the time interval  $dt$  in seconds, you need to check that the time scale is accurate. To do this, you need to send pairs of pulses from DG645 generator to the digitizer, vary the time interval between the pulses, and reconstruct this time interval with the VI.

- First, reconfigure the internal trigger of the Delay Generator to 50 Hz.
- Set an AB pulse of 1V and CD pulse of 0.5V. Configure the CD output of the Delay Generator to send out a 100ns pulse some time after the AB pulse. Remember that you set the AB pulse to be sent 1  $\mu$ s after the internal trigger, so setting the CD pulse to begin at 3  $\mu$ s will correspond to a time difference of 2  $\mu$ s between the pulses. Set the AB polarity to negative and the CD to positive (remember the splitter inverts the Channel 1 input).
- View the signal on the scope and make sure that the signal is what you expect. Note the time difference between the pulses. Use the scope to determine the initial trigger (you should trigger on the AB pulse) and the pulse detection threshold (CD pulse).
- Plug output AB into input 1 of the Power Splitter, and plug output CD into input 2 of the power splitter. Plug output S into the digitizer channel to be tested
- Run the Muon Detection program to collect data. Set your trigger and pulse detection thresholds to what you determined when you viewed the signals on the scope.
- You should see just one of the histograms bins being filled. You should collect data for enough time differences to be sure that the digitizer reads all time differences correctly, from 1  $\mu$ s to 40  $\mu$ s.
- Repeat this procedure for the other digitizer channel.

4. **Linearity of the pulse height measurement.** With the setup above, set the time difference between AB and CD to some fixed value (e.g. 5  $\mu$ s), and vary the amplitude of AB and CD. Collect data for each setting, plot the reconstructed pulse heights versus the amplitude set by the DG645 generator. How linear is the digitizer? Can you also think of a way to check the linearity of the 40 dB amplifier?

## 8 Analysis

Excel is insufficient for this kind of data analysis. You should write a script in python, MatLab, RooT, etc...

1. Import the raw data from the text file into a program of your choice. Open the text file to see column delineations. Pay attention to column heads. A good place to start is by making an array/list for each column.
2. Inspect the distribution of pulse heights and pulse widths for both the first and second pulses. Can you explain their features? Apply a cut, which means to remove outliers (such as low-amplitude noise pulses). See how the distribution of time separation  $dt$  changes when you cut on pulse height.
3. Determine if the  $dt$  plot needs to be corrected for any non-uniformity measured in **Step 2** of the **Calibration** section
4. Determine if you should apply time calibration from **Step 3** of the **Calibration** section
5. Make a semi-log plot of counts  $D$  vs. time separation  $dt$ . On this plot, fit the background (which starts from about 10 to 20  $\mu\text{s}$ ) to a straight line (with the slope not necessarily zero). Extrapolate the line under the muon decay region and subtract the background in each channel from  $D$ , yielding  $D_2$ . **THINK:** How does the choice of the background fit influence your results? Is the fit to the background a constant throughout time, a linear decay, or an exponential decay. Once you have determined the fit and keeping in mind that we are interested in the counting rate, think about how you can properly remove this background noise from the muon decay region. Discuss what could be determining the fit of the background and its correlation to the data you are interested in.
6. Make a semi-log plot of  $D_2$  vs  $dt$ . Make sure errors are correctly computed for  $\log D_2$ . Make a least-squares fit to a straight line (over a time interval where such a fit makes sense). The slope of this line is inversely proportional to the “effective” muon lifetime. Also show lines corresponding to “effective” lifetimes that are one standard deviation higher and lower than the mean lifetime. All lines should be normalized to the same total number of counts. After you make a fit, also check and see how the calculated exponential curve fits the measured curve. Observe how the lifetime values and the  $\chi^2$  of the fit change depending on fit range. Justify why you picked a certain fit range.
7. Be sure to read Evans Chapter 15 at this point. As indicated in the lab write-up, some negatively charged muons ( $\mu^-$ ) undergo nuclear capture in the muonic carbon nuclei of the mineral oil in the scintillation tank. These muons generate a start pulse when they enter the detector but do not generate a stop pulse when they are nuclear captured. Therefore their decay times are not detected. Although the reprints show that the entire population of  $\lambda_{\text{combined}} = \lambda_{\text{decay}} + \lambda_{\text{captured}}$ , it may not be obvious that the *free-decaying*  $\mu^-$ 's will also decay with this combined rate. This is a subtle point that you should be sure to ask about if you need to.
  - Note that  $\lambda_{\text{decay}} \cong \frac{1}{2.2\mu\text{s}}$  for both positive and negative free muons, and that  $\lambda_{\text{captured}} \cong \frac{1}{26\mu\text{s}}$  is the rate of negative muon decay in the material (carbon) of the detector.
  - As discussed above, there are *two* different populations of muons that you measure,  $\mu^-$  and  $\mu^+$ , and they decay with the different decay rates,  $\lambda_{\text{combined}}^{\mu^-}$  and  $\lambda_{\text{decay}}^{\mu^+}$  respectively. The histogram of decay-times that you will get from the equipment (barring background and noise) is the sum of *two* exponentials:  $\text{Histogram}(t) = A \exp(-t\lambda_{\text{combined}}^{\mu^-}) + B \exp(-t\lambda_{\text{decay}}^{\mu^+})$ , where  $A$  and  $B$  are constants. To analyze these data properly requires a non-linear curve fitting program. But because  $\lambda_{\text{combined}}^{\mu^-}$  and  $\lambda_{\text{decay}}^{\mu^+}$  are very close to each other, it is difficult to get good results. Instead, it is recommended that you fit your data to a *single* exponential:  $\text{Histogram}(t) = C e^{-t\lambda_{\text{effective}}}$ . This gives you an “effective” life-time. The use of the word “effective” is only to signify the answer the computer gave you. It is possible to fit any curve to a single exponential and get an answer; the computer just does the best it can. So when you are asked to estimate the true lifetime, expect to make some approximations and don't expect to come up with an exact answer.

- Assuming that half of the observed decays come from  $\mu^-$ , with apparent decay rate  $\lambda_{\text{combined}}^{\mu^-}$ , estimate the magnitude and sign of the difference between the true muon lifetime and the “effective” lifetime (for  $\mu^+$  and  $\mu^-$  together) measured in this experiment.
8. What is your value of the muon lifetime and its uncertainty, and how does this value compare with the published lifetime? **IMPORTANT:** estimate *systematic* uncertainties, i.e. think how the procedure, calibration, etc. may bias your results.
  9. What is the value and uncertainty of the Fermi Coupling constant determined in this experiment? How does this measurement compare with the published value?

## 8.1 Note on Analysis Tools

This analysis can be done with a variety of tools, but we would recommend one of the more common packages designed for high-volume datasets. Thus, while it’s possible to do a rudimentary version of the analysis in Excel, we do not recommend it, and we do not provide pre-packaged histograms of  $dt$  for that reason. MATLAB is installed on the Advanced Lab computers, including the convenient Curve Fitting and Statistics add-on packages, as well as additional home-made fitting tools. Comprehensive tutorials for MATLAB are available at [Intro to Matlab](#) and elsewhere on the web (some useful functions are `hist()` and `histfit()` and it would be very wise to review the error analysis lab). If you want to use MATLAB outside the 111 lab, it is available for students at a discount at the University Store. There is also a GPL (free) clone [Octave](#), which is compatible with MATLAB at about 90% level (that is, about 90% of the commands are implemented, but the Curve Fitting package, regrettably, is not available). Octave can be downloaded for Windows, MacOS, and Linux.

The tool of choice for High Energy and Nuclear physics is [ROOT](#). It is a sophisticated data statistical analysis package, specifically designed for analyzing large data sets, curve fitting, etc. While MATLAB is best at linear algebra and signal processing, ROOT is most natural for reading a large data set, applying cuts, and performing non-linear fits. ROOT is available for free download from [CERN](#), and there is good documentation and tutorials on the [Root’s main site](#). We also provide a sample (bare bones) analysis examples below: [Muon Analysis in ROOT](#)

## 9 Computer simulation of experiment and analysis

Write a program in Matlab (or other software of your choice) to simulate muon decays and accumulate their lifetime distribution. Fit the generated data using whatever means you used above to determine the muon lifetime. Software routines that simulate data are called Monte Carlo programs (see ref. 10 or 11). By fitting this computer-generated data you can directly verify that the fitting procedure reproduces the input parameters (i. e., number of events and lifetime). These Monte Carlo simulations are common in complex experiments to model the experimental system and check the analysis methods.

Computers usually generate random numbers  $r_i$  uniformly distributed over the interval (0,1), that is, the successive values, called iterates, of  $r_i$  are described by the probability distribution

$$P(x)dx = 1 \tag{4}$$

You wish to simulate a series of muons whose lifetimes  $t_i$  follow an exponential probability distribution

$$P(x)dx = \tau \exp(-\tau x) \tag{5}$$

where  $\tau$  = mean muon lifetime. Prove that

$$t_i = -\tau \ln r_i \tag{6}$$

will convert iterates from the uniform distribution to the exponential distribution [see ref. 10 or 11]

Write a program to

- generate a number of exponential iterates,  $t_i$ , and
- sort them into time channels  $N_k$ , which roughly correspond to the width and range of the experiment channels. (Increment  $N_k$  by 1, if  $t_i$  falls into the range of channel  $k$ ).
- and store the data on the disk drive.

Fit these data with your fitting program. Investigate the dependency of the fitting program output on the number of events simulated. How many exponential iterates are needed to get good results from the fit?

A more detailed Monte Carlo analysis of your experiment is possible. For instance, generate the accidental background and study the influence of accidentals, statistics and fit -range on the results of your analysis.

- Last day of the experiment please fill out the [Experiment Evaluation](#)

## 10 References

1. Particle Data Group reference page: <http://pdg.lbl.gov>
2. B. Rossi, “**Interpretation of Cosmic-Ray Phenomena**”, Rev. Mod. Phys. **20**, 537 (1948).
3. D. Griffiths, ***Introduction to Elementary Particles***, 1987. *Read the introduction (pp. 1-10). The result of a tedious calculation of the muon lifetime is given in pp. 307-309.*
4. R.D. Evans, ***The Atomic Nucleus***, McGraw-Hill (1955). *Read about radioactive decay in Chapter 15.*
5. C.S. Sutton et al., “**Undergraduate Cosmic Ray Muon Decay Experiments with Computer Interfacing**”, Computers in Physics, Nov/Dec, 76 (1987), #QC52.C658.
6. O.C. Allkofer, ***Introduction to Cosmic Radiation***, Verlag Karl Thiemig, Munchen (1975).
7. “**RCA-4522 Photomultiplier Tube Specifications**”, RCA Electronic Components, June, 1 (1968).
8. National Instruments **Waveform 5124 Digitizer Manual**.
9. **RCA Photo Multiplier Tube Manual**.
10. **Stanford Research Systems DG645 Manual**
11. Full equipment list found [here](#)